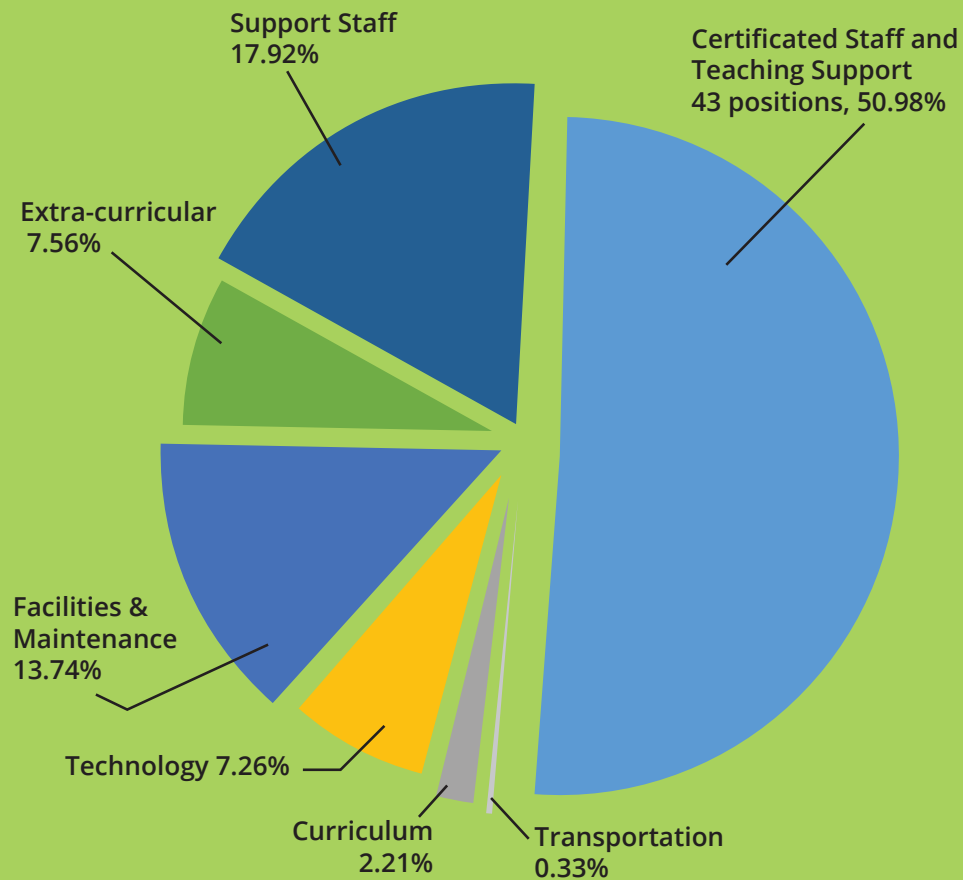


What does the EP&O Levy provide?

Based on the 2016-17 budget, the table below is an approximate usage of the EP&O Levy:



The current levy expires December 31, 2017

The EP&O Levy represents 22% of the District's overall budget.

Sequim School District is home to award-winning, nationally recognized schools and programs.

Non Profit Org.
U.S. Postage
PAID
Olympic Mailing
Services

ECRWSS

Sequim School District No. 323
503 North Sequim Avenue, Sequim, WA 98382

Board of Directors

- Robin Henrikson, President
- Beverly Horan
- Michael Howe
- Heather Short
- James Stoffer

Superintendent

Gary Neal

Sequim School District does not discriminate in any programs or activities on the basis of sex, race, creed, religion, color, national origin, age, veteran or military status, sexual orientation, gender expression or identity, disability, or the use of a trained dog guide or service animal and provides equal access to the Boy Scouts and other designated youth groups. The following employees have been designated to handle questions and complaints of alleged discrimination: Title IX Coordinators, Civil Rights Compliance Coordinators: Randy Hill, 601 N. Sequim Ave., Sequim, WA 98382, 360-582-3609, rhill@sequim.k12.wa.us or Paul Wieneke, 503 N. Sequim Ave., Sequim, WA 98382, 360-582-3261, pwieneke@sequim.k12.wa.us and for Section 504/ADA Coordinator, Matt Duchow, 503 N. Sequim Ave., Sequim, WA 98382, 360-582-3401, mduchow@sequim.k12.wa.us

SEQUIM SCHOOL DISTRICT CITIZENS



Sequim School District

www.SEQUIM.k12.wa.us | (360) 582-3260

Inspire & Achieve!

Capital Projects and EP&O Levies



Why is our District asking for funding?

Washington State does not fully fund the cost of basic education nor does it fund the cost of building new schools, renovating old schools, large maintenance projects or technology needs. As a result, the State allows districts to ask local voters for funds to pay for continued basic education support and other projects that are not sufficiently funded.

Election February 14, 2017

Voter registration in person by Feb. 6, 2017

Renewal of the Educational Programs & Operations Levy

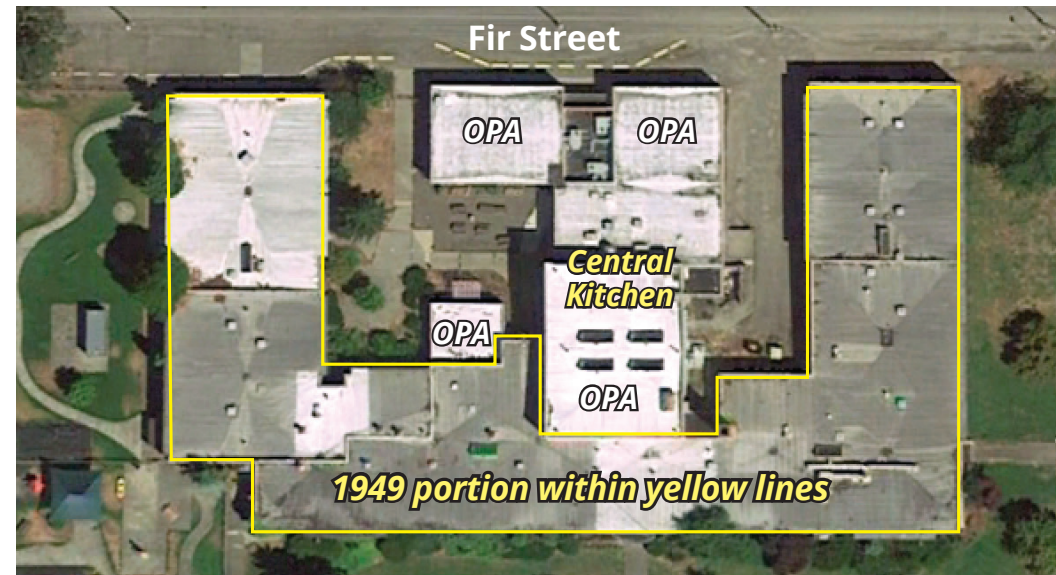
Why are we running a renewal of the current EP & O Levy?

- The current levy expires in December 2017.
- In order to maintain the level of education and services provided to students and families, a renewal of the levy is needed.
- The District continues to request a levy amount below the allowable levy ceiling set by state statute.
- Without local support, district-wide operations would be significantly affected.

Capital Projects Levy

What is a Capital Projects Levy?

It is a voter-approved measure that provides funding for repurposing school buildings, and for critical safety and technology infrastructure repairs and replacements. By law, Capital Projects Levy dollars cannot be used to operate schools or programs.



Sequim Community School

To calculate what you would pay in property taxes for the combines levies, use the Levy Calculator at www.SEQUIM.k12.wa.us.

What would this Capital Projects Levy provide?

A Capital Projects Levy would fund demolition of the unused portion of the Community School, allowing the District to qualify for \$4.3 million in state matching funds for new school construction once a construction bond is approved.

In 2012, the Sequim School District moved programs out of a portion of the Sequim Community School that was found to be unsafe for students. That part of the building, built in 1949, awaits demolition.

The other part of the building, built in 1979 — home to the District’s central kitchen and Olympic Peninsula Academy (OPA), the District’s Alternative Learning (ALE) program — would remain and continue to be used for those programs.

The Capital Projects Levy would also help the District upgrade the central kitchen facility by modernizing heating, ventilation and air conditioning (HVAC), electrical and fire protection systems, installing a double door, and acquiring and installing increased freezer space. The central kitchen facility currently uses World War II-era appliances, and the freezer holds enough space for just two days’ worth of food for the District’s 2,700+ students.



For more information about the Levies  www.SEQUIM.k12.wa.us

Educational Programs & Operations Levy Cost

4-Year Educational Programs & Operations Levy	Levy Amount	Estimated Levy Rate (per \$1,000 of assessed value)
2018 (Year 1)	\$6,324,000	\$1.52
2019 (Year 2)	\$6,524,000	\$1.54
2020 (Year 3)	\$6,724,000	\$1.55
2021 (Year 4)	\$6,924,000	\$1.57

Capital Projects Levy Cost

3-Year Capital Projects Levy	Levy Amount	Estimated Levy Rate (per \$1,000 of assessed value)
2018 (Year 1)	\$681,000	\$0.16
2019 (Year 2)	\$1,549,000	\$0.36
2020 (Year 3)	\$3,525,000	\$0.81

EP&O and Capital Levy Combined Estimated Tax Rate:

	EP&O Levy Rate	Capital Levy Rate	Total Levy Rate per \$1,000
2018 (Year 1)	\$1.52	\$0.16	\$1.68
2019 (Year 2)	\$1.54	\$0.36	\$1.90
2020 (Year 3)	\$1.55	\$0.81	\$2.36
2021 (Year 4)	\$1.57	\$0.00	\$1.57